

FOR IMMEDIATE RELEASE

Contact: Allison Kramer; allison@travergallery.com

January 2010 at Traver Gallery – Tacoma

Jeannet Iskandar: *Between Fragment and Whole*

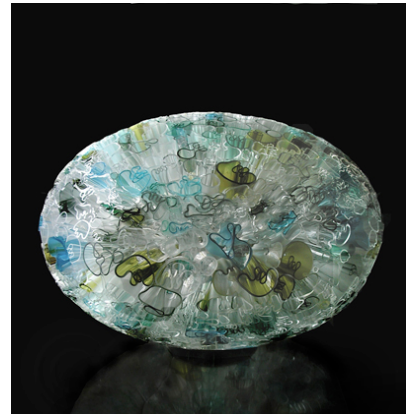
Exhibition Runs: January 16 – February 7, 2010

Opening Reception: Saturday, January 16, 4 – 7 pm

Jeannet Iskandar: *Between Fragment and Whole*

Traver Gallery Tacoma is pleased to present Danish glass artist Jeannet Iskandar's first North American solo exhibition, *Between Fragment and Whole*, showing January 16 - February 7. Both organic and meticulously composed, Iskandar's ethereal constructions of suspended light and line meet at a confluence of rhythm and repetition.

Precise without being predictable, the eight works in the exhibition reveal Iskandar's sophisticated understanding of material and form. Aiming to unite the opposing concepts of simplicity and complexity into a singular expression, wavy ribbon-like components coalesce into three-dimensional patterns in Iskandar's hands. With an almost insistent intensity, the rhythm of repetition focuses the viewer on the perception of shape with regard to the translucent, dimensional qualities of glass.



Iskandar drew inspiration for *Between Fragment and Whole* from the mathematical constant *Pi* (π) and Ravel's musical masterpiece *Boléro*. The thread joining these, says the artist, is a simultaneous complexity of structure and simplicity of expression. Says Iskandar of her influences, "They expand with each additional sequence, yet each sequence contributes to the same basic pattern, which makes the expression calm and whole." Similarly, subtle breaks in the visual rhythm of each of her blown, cut and tack-fused spherical and ovoid sculptures serve to increase their overall refinement.

Jeannet Iskandar is based in Esbjerg, Denmark and has apprenticed to notable artists in Europe including Tobias Møhl, Trine Drivshol, Steffen Dam and Susanne Jøker Johnsen. Iskandar made her North American debut with Traver Gallery in 2009 as one of 39 artists featured in the exhibition *Look Forward*, in which masters of the studio glass movement selected up-and-coming studio glass artists to show alongside their work.

Caption Info: "Between Fragment and Whole: Ellipse II," 2009, blown, but and tack-fused glass, 15.7"h x 21.7"w x 21.7"d
Photo: Poul Ib Henriksen

Located on Tacoma's Thea Foss Waterway and adjacent to the Museum of Glass, Traver Gallery is among the nation's premier exhibition spaces for contemporary studio glass, painting, sculpture, and installation art. Gallery hours are Tuesday – Saturday 10 – 6 and Sunday 12 – 5. For more information, please call (253) 383-3685 or visit our website at www.travergallery.com.